

**Nordic Music Days
Executive Committee**

Honorary Chair
Erik D. Laursen

Musical Director
George Shangrow

Directors
Nina Bertelsen
Tove Klinkby

Publicity
Kirsten Vilholm

Treasurer
Ernst O. Jensen

Food and Beverage
Inge Miller

Advisors
Bodil Bak Jones
John Mathiasen
Martin Metzon
Otto Brask
Dan Petersen

Program Advisor
Svend Ravnkilde

Danish Music Information Centre

Danish Diction
Kirsten Vilholm
Hanne Ladefoged

Teaching the Lancier
Robert Nels Wickström

Events Coordinator
Sandra Anderson

Decorations
Vivi Hamond

Information Table
Christianne Tove White

This event would not have been possible without the extraordinary patience and knowledge of Svend Ravnkilde of the Danish Music Information Centre.

We would also like to thank all of the volunteers, sponsors, and dancers who so generously donated their time and effort.



Painting courtesy of Thorvaldsens Museum

Nordic Music Days
SEATTLE 1995

*A Three Day Celebration of
Denmark's Golden Age*

Event Program

Nordic Music Days

SEATTLE 1995

Most countries have experienced a cultural blossoming often labeled the Golden Age: Rome under Emperor Augustus, England during the Elizabethan era, France with its dramatic masterpieces of the Seventeenth Century. Two unique features of the Golden Age in Denmark (1800-1850) were that it coincided with the romantic movement and that it was much less centered around literary achievements but rather found its expression in all the arts with frequent cooperation between the artists.

Denmark was financially weak throughout the first three decades of the 19th century. Paradoxically, the near bankruptcy of the Danish State in 1813 was followed in 1814 by an Act making a minimum of seven years of elementary education a birthright of all Danish children. This epoch-making Act brought a new repertoire of quality songs in the mother tongue. The growing literacy made it possible for ordinary folk to familiarize themselves with pamphlets, newspapers, periodicals and books.

The first thirty years at the beginning of the century were interesting in their own way. The climate was economically dismal yet society, culture, and the arts flourished. And then, suddenly and gloriously came the high summer of the Golden Age in Denmark.

Frontcover painting by J.Th. Lundbye:
An Ancient Barrow near Raklev on Refsnæs, 1839.

Never before had an ancient burial mound been positioned in such monumental fashion in the lightfilled landscape of a Danish summer. No romantic melancholy here, just a fond delight in the Danish countryside with its clear expanses of sky, its hills and dales.

Information courtesy of Danish Music Information Centre.

Fantasies and the Golden Age

Friday, September 29, 1995 8:00 PM
Women's University Club Ballroom

Opening Night Greetings
By Consul Erik D. Laursen
Royal Danish Consulate

Songs from the Golden Age

Piano—Mina Miller

Sverkels Romance
(From the opera *Liden Kirsten*)
J.P.E. Hartmann—Hans Christian Andersen
Tenor Robert Nels Wickström

Underlige Aftenluft
Hvor sødt i sommeraftenstunden
Carl Nielsen—A. Oehlenschläger
Mezzo soprano Hanne Ladefoged

Irmelin Rose
Carl Nielsen—J.P. Jakobsen
Soprano Katarina Bonde

Fantasies

for the Piano and Clarinet
(Fantasi stykker, op. 43)

Niels W. Gade
Andantino con moto—Allegro vivace
Ballade: Moderato—Allegro molto vivace

Clarinet—Gary Oules

The Golden Age

Professor Sven H. Rossel

Five Piano Pieces (Opus 3)

Carl Nielsen
Folketone—Humoreske—Arabeske
Mignon—Elfdance

Violin—Deborah Kirkland

Jeg Elsker Dig

Grieg—Hans Christian Andersen
The audience is the singer for this love song

Reception

Champagne Galop.

H. C. Lumbye,

Lundgaard's Ateliers
Vinduet i Svanegade No. 1

Printed Lumbye souvenir card combining photograph and autograph signature as well as music quotes from the opening of Lumbye's all-time greatest hit Champagne Galop (1845).

Information courtesy of Danish Music Information Centre

Tivoli in Seattle

Saturday September 30, 1995 7:00 PM
Nordic Heritage Museum

Orchestra Seattle

Conducted by George Shangrow

An evening of dance to music by the first musical director of Tivoli Gardens in Copenhagen, H.C. Lumbye

The Danish Court Dance *Les Lancier*

Dance the tango to Jacob Gade's *Tango Jalousie*

The romantic waltzes of Strauss

Intermission

Gammel Dansk

from Vancouver B.C.

Gammel Dansk presents traditional folkdance music to dance the Hambo, Hopsa, Schottis, Polka, and Waltz

Kong Valdemars Tugt.

(Lærebogen Pag. 119.)

N. W. Gade.

Offe for hnetigt.

1. Paa Sjølund's fa-gre Slet-ter, ved H-ser-zø-ens Bred, hvor Skoven Krandsfæ Slet-ter om En-gens Blomster-

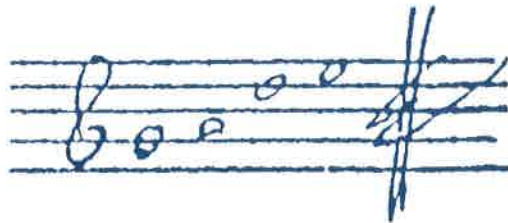
bed, hvor Sof-ver-til-den gli-ber nu ved Ru-i-nens Fod, der stolt i gam-le Ti-der en Konge-bo-sig stod.

On the Fair Plains of Zealand

Originally published in 1816 Ingemann's poem (subtitle A Legend from Zealand) relates the story of the haunted King Valdemar. Gade's song is quoted in its entirety in the evocative *Moderato con moto* opening of his Symphony No. 1 and also furnishes the thematic material for the ensuing *Allegro energico*.

Information courtesy of Danish Music Information Centre

During his lifetime Niels W. Gade enjoyed an unusual degree of international recognition, not only in Germany, where he had a brilliant career in association with Felix Mendelssohn in Leipzig in the 1840's, but also in a number of other European countries. After his return to Copenhagen in 1848 and until his death in 1890 he was the undisputed leader of Danish musical life.



Tribute to Niels W. Gade

Sunday October 1, 1995 7:00 PM

First United Methodist Church

Orchestra Seattle/Seattle Chamber Singers

Conducted by George Shangrow.

Overture: Efterklange af Ossian, Opus 1

Niels W. Gade

Symphony No. 1 in C Minor, Opus 5, First Movement

Niels W. Gade

Moderato con moto-Allegro energico

På Sjølund's fagre sletter

for choir and orchestra

Niels W. Gade - B.S. Ingeman

Et Folkesagn

Niels W. Gade-J.P.E. Hartmann

A Ballet by August Bournonville

Ballet fragments danced by Ulrik Wivel

Et Folkesagn premiered at the Royal Theatre in 1854 - old tales and myths are the basis of the story. Trolls, elves and noble Danes are all on the scene. Gade's and Hartmann's music wrapped this fairy tale in national romantic music valued even today.

Intermission

Elverskud, Opus 30

for choir, solo voices and orchestra

Niels W. Gade

Katarina Bonde Soprano - The Elfking's daughter

Hanne Ladefoged Mezzo soprano - The Mother

Robert Nels Wickström Tenor - Oluf

Elverskud is based on old folk ballads and became Gade's most popular work.

Commentary by Professor Louis Christensen

Artist Profiles



George Shangrow
Conductor

George Shangrow is Music Director of Orchestra Seattle and the Seattle Chamber Singers, a position he has held since 1969 when he founded the organizations. His repertoire includes the music of all eras with special emphasis on the Baroque and 20th century literature.



Ulrik Wivel
Ballet Dancer

Ulrik Wivel is a native of Denmark and was trained at the Royal Danish Ballet School. He joined the Royal Danish Ballet as a full company member in 1986 and was promoted to soloist. He joined Pacific Northwest Ballet in 1993 as a soloist and was promoted to principal.



Mina Miller
Pianist

Mina Miller is internationally renowned for her interpretation of the music of Carl Nielsen. Aside from touring extensively in Europe and America, Ms. Miller is Professor of Music at the University of Kentucky and a Visiting Scholar at the University of Washington.



Katarina Bonde
Soprano

Katarina Bonde is from Stockholm where she obtained her degree in voice performance at the Opera School while studying with Berit Lindholm. Ms. Bonde now lives in the Northwest and performs frequently at Scandinavian functions.



Hanne Ladefoged
Mezzo-soprano

Hanne Ladefoged obtained her masters degree in Musicology from the University of Copenhagen. In 1993 she joined the Seattle Opera Chorus and their young artist community outreach program. Ms. Ladefoged is a frequent recitalist around the Northwest.



Robert Nels Wickström
Tenor

Robert Nels Wickström is a native of the Northwest currently finishing his degree in voice performance at Western Washington University. Mr. Wickström is a regular member of the Seattle Opera Chorus and deeply involved in performance of the music and dance of the Nordic countries.

Artist Profiles

Orchestra Seattle/Seattle Chamber Singers

Led by founder and music director George Shangrow, Orchestra Seattle/Seattle Chamber Singers is a 120 member semi-professional orchestra and chorus. The membership includes professional musicians, music teachers, composers, and highly skilled amateurs. Since its founding in 1969, OS/SCS has been at the center of Seattle musical life and has provided artistically challenging and rewarding opportunities for both Northwest audiences and artists. OS/SCS is distinguished by its reputation as one of Seattle's most accomplished interpreters of the music of Handel and Bach and for championing the works of Northwest composers. The group has performed or premiered major orchestral works by Northwest composers during every concert season. OS/SCS has also performed extensively in collaboration with Seattle's ethnic communities and performs education outreach programs for area youth.

Gammel Dansk

From Vancouver, B.C., Gammel Dansk perform Scandinavian music throughout the Pacific Northwest. The groups instrumentation is traditional Danish, using the clarinet, violin, base violin, accordion and key fiddle.

Sven H. Rossel

Lecturer

Sven H. Rossel received his degree at the University of Copenhagen, previous chair of the Scandinavian Dept. at UW and is at present professor of Comparative and Scandinavian literature at the UW. Mr. Rossel has also taught in Germany and Austria. Mr. Rossel is author or editor of 20 books.

Louis K. Christensen

Lecturer

Louis K. Christensen is professor of music at Seattle University. Mr. Christensen is a native of Denmark where he earned his doctorate at the University of Copenhagen.

Sponsors and Credits

Distinguished Patronage by the DANISH CLUB

Special Thanks to our early Corporate Underwriters:

Carnitech USA
Zymogenetics
Scandinavian Airlines

Royal Danish Embassy
Danish Culture Ministry Advisory Council
(Statens Musikråd)
Danish Music Information Centre
Northwest Danish Foundation
Scandinavian Cultural Center Tacoma, WA

Individual Contributors

Ronald and Bodil Bak Jones
Georg Emil Pedersen
Knud and Shirley Hallin Olsen
Flemming and Lexie Sørensen
Nina Bertelsen
Wilhelmina Parker
Ernst and Linda Jensen
Tove Klinkby
Paul O. Nielsen
Poul and Terie Larsen
Egon and Laina Molbak
Ingeborg Kisbye
Annelise K. Dennison
John E. Mathiasen

In Kind Donations

Thorvaldsens Museum Copenhagen Denmark
Rainier Color Inc.

Classic
KING FM 98.1

Why Fly With Just An Airline When You Can Fly With Family.



No other airline can offer you the most comfortable feature of all--fellow Scandinavians.

So besides great service to Copenhagen, Oslo

and Stockholm, it's a little like home the second you step aboard. Especially when you meet so many people from so many familiar places. Instead of simply landing in Scandinavia, you'll almost feel you're

there before you take off.

For information on flights and reservations, call your travel agent or SAS at 800-221-2350. Think of it as a call home.

SAS
SCANDINAVIAN AIRLINES